

# Sunón

# Sunón

## European R&D Center

Add: Brunnenstrasse 156, 10115 Berlin, Germany

## Sunon Mexico Manufacturing Base & Experience Center

Add: Calle Palomas No. 201, Parque Industrial Hofusan, Salinas Victoria, Nuevo León CP 65500

## USA Headquarters & Experience Center

Add: 311 N Green Street, Suite 900, Chicago IL 60607

## Singapore Branch & Experience Center

Add: #01-02 R Building, 18 Robinson Road, Singapore 048547

## India Branch & Experience Center

Add: Floor I & II, 643, Rd Number 36, Aditya Enclave, Venkatagiri, Jubilee Hills, Hyderabad, Telangana 500033, India

## Headquarters & Experience Center - Sunon Technological Innovation Park

Add: No.1666 Zhixing Road, Xiaoshan District, Hangzhou, Zhejiang, China

     @sunonfurniture [www.sunonglobal.com](http://www.sunonglobal.com) [info@isunon.com](mailto:info@isunon.com)



## JASON SERIES



As if you were in a Norwegian Wood with lush trees and boundless land in sight. Elks and brown bears are chasing after each other. Behind them, glaciers and rivers are stretching on along the horizon...Inspired by splendid Nordic scenery, Jason's designer integrates the aura of natural landscape into his design, and creates an office environment with burlywood where men and nature could co-exist harmoniously. Sit down, immerse yourself in the fragrance of nature, and free your soul from urban noises.

# JASON II

---

Morning light reveals the fabric. This sofa connects nature with your space through a clean design and traditional wood joinery.





A solid wood frame meets soft, inviting cushions. This union brings together the warm feel of wood with the cozy comfort of upholstery, creating a relaxed, effortless vibe.



Every time you lean back, it feels like sharing a quiet moment with nature.  
Enjoy the simple, calm relaxation.





Perfect for quiet reflection or happy gatherings, Jason II blends natural simplicity with smart design. It turns everyday meals into special moments and adds beauty to every dining experience.



# JASON I

---

As if you were in a Norwegian Wood with lush trees and boundless land in sight. Elks and brown bears are chasing after each other. Behind them, glaciers and rivers are stretching on men and nature could co-exist harmoniously. Sit down, immerse yourself in the fra



It never tries to attract attention by carrying out bold posture. Legs with smooth lines and concealed cable management devices, make it understated yet powerful.



The one-piece side cabinet with a combination lock at your command and tray designed on the top will make your work more organized.

Be minimalist. Less is more.





The environment-friendly felt desk-mounted screen will create a new world for you. No matter for office working or communication, this space is all yours.



In a room filled with winter sunshine, there stands a high office desk, presenting the notion of minimalist aesthetic with the understated charm of burlywood.



It is processed with patented edge-banding technology with wood grain that is as real as the work of Mother Nature. The four corners are meticulously rounded to provide better support for your arms. Connected with mortise and tenon joint technique, it is a work of craftsmanship.



Nights are long in winter across the Arctic Pole. Finnish people always like to drink a little with several close friends in a time like this. See, who's proposing a toast and starts to sing tipsily yet happily? And who's lighting the campfire and begins another party? The dancing flame illuminates the lake, and lights up the dark winter.



A cup of coffee and a book, a bookshelf and a chair, a blanket and a pillow:  
these are all we need to create a scene of Nordic style.



Specification

Jason II



SJ62.1.EPU  
W820\*D775\*H815\*H440(mm)



SJ62.2.EPU  
W1485\*D775\*H815\*H440(mm)



SJ63.1.EPU  
W580\*D530\*H830\*H480(mm)



SJ64.1.EPU  
W485\*D530\*H830\*H480(mm)



SJ62.1.MX  
W820\*D775\*H815\*H440(mm)



SJ62.2.MX  
W1485\*D775\*H815\*H440(mm)



SJ63.1.MR  
W580\*D530\*H830\*H480(mm)



SJ64.1.MR  
W485\*D530\*H830\*H480(mm)

Jason I



EW80  
W2000\*D950\*H760(mm)



EW78  
W2400\*D1200\*H760(mm)



EW77  
W2400\*D1200\*H1050(mm)



EW71  
W1200\*D400\*H1050(mm)



EW72  
W1600\*D600\*H1050(mm)



EW70  
φ1100\*H1050(mm)



EW90  
W2002\*D560\*H1500(mm)



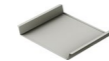
EW25  
W1002\*D560\*H610(mm)



EW26  
W373\*D440\*H540(mm)



EW91  
W1200\*D400\*H1200(mm)



EFJ39  
W375\*D300\*H41(mm)



EFJ40  
W470\*D300\*H41(mm)



EFJ43  
W1175\*D350\*H8(mm)



EFJ41  
W65\*D65\*H65(mm)



EFJ42  
W65\*D65\*H65(mm)

Material

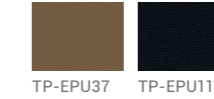
Jason II

Sofa

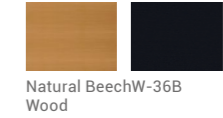
EPU Series Upholstery



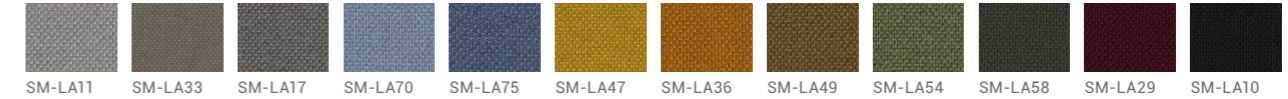
Back Panel



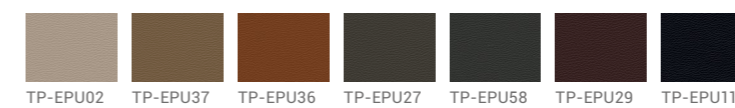
Wooden Legs



Leather-Fabric Series Upholstery

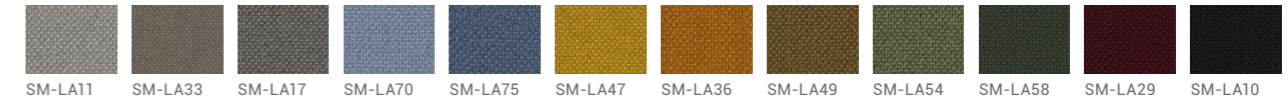


Back Panel



Single-Chair

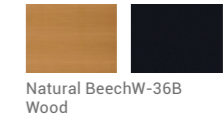
Linen Fabric Series Upholstery



EPU Series Upholstery

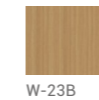


Wooden Legs



Jason I

Main Color



(EW77/EW90/EW25/EW26/EW91/EFJ43) Auxiliary Color

